

F BLOCK T1 | EVENTS SPACE

F BLOCK T1

THE
TRUMAN
BREWERY

F BLOCK T1 | EVENTS SPACE



EVENTS



FASHION
SHOWS



TRADE
SHOWS



CONFERENCES



EXHIBITIONS



LICENSED

ABOUT

F Block T1 is The Truman Brewery's largest single room event space. Extremely versatile, this repurposed warehouse now benefits from crisp white walls, concrete floors and skylights. T1 can effortlessly accommodate trade and consumer shows, exhibitions, gala dinners and fashion shows, in addition to providing an exceptional space for filming and photography. For larger events, T1 can be hired in conjunction with the interconnecting rooms on the first floor of the building, and can create the ultimate sprawling events building when used with the ground and second floor spaces.

ACCESS

Guest access is available via the entrance on 81 Brick Lane and two entrances on Hanbury Street.

Lift access/loading bay is available via Ely's Yard Car park (subject to prior agreement).

ADDRESS

81 Brick Lane, London, E1 6QL

CAPACITY

Event specific

SIZE

21,707 sqft

LEVEL

First floor

CEILING HEIGHT

4m



LOCATION

T1 has entrances on 81 Brick Lane and two on Hanbury Street. F Block is situated in one of London's most vibrant and energetic areas known throughout London. The iconic Truman chimney and ever-active Estate is frequented by media, creative, fashion and tech industry denizens. The area attracts many thousands of visitors to the bustling work spaces, themed events, weekend markets, eye-popping street art, boutiques, cafes and rich diversity of restaurants.

POWER

2 x 63A 3 Phase C Form Socket.
1 x 32A Single Phase C Form Socket (Production Room).
9 x 40A banks on columns.
Twin 13A Sockets throughout.

COMMS

The Truman Brewery's dedicated on-site service provider, TruTec Services, can easily provide support, networking, telephony and internet connectivity to this location.

LIGHTING

Strip Lights.

SERVICES

T1 benefits from three production rooms set back above the main floor space. There is also a courtyard on the first floor, accessible from the event space and production rooms.

4 x male toilets plus urinals, and 8 x female toilets.

1 x Disabled toilet / baby changing facilities.

SUPPLIERS

We recommend the use of the following teams:

EVENT PRODUCTION:

E1 PRODUCTIONS

INTERNET CONNECTIVITY:

TRU TEC SERVICES

SECURITY:

Trusec Security Ltd.
Event Security Services

EVENT CLEANING SERVICES:

The Truman Brewery
Event Cleaning Services





THE TRUMAN BREWERY

A: 91 Brick Lane, London E1 6QL
T: 0207 770 6011
E: monika@trumanbrewery.com

DRAWING NAME

F.01.T1

SPACE DETAILS

F BLOCK
1ST FLOOR - T1
BASIC PLAN

VENUE LOCATION

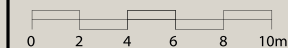
F Block
15 Hanbury Street
London E1

LEASE AREA (WITHIN RED BOUNDARY)

21707 sqft

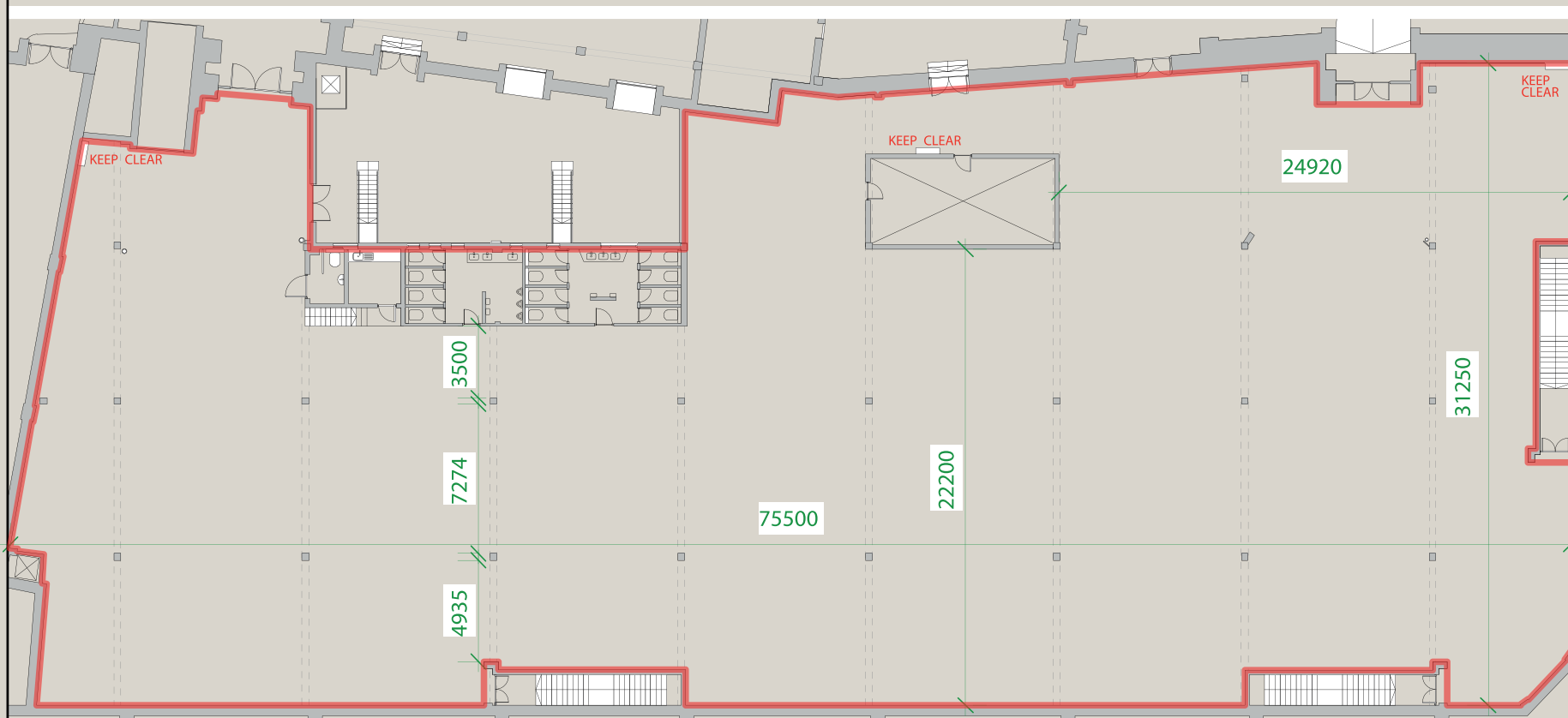
SCALE

1:320 @ A4



NOTES

--- SIGNIFIES CEILING
STRUCTURES ,
MOSTLY BEAMS



All measurements are approximate .
Measurements in millimetres .

DO NOT SCALE .
IF IN DOUBT ASK .

STUDIO

10.50

HALL 10

HALL 10

DESIGN AWARDS WINNER

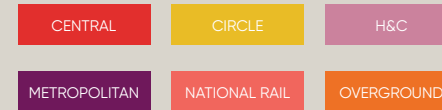


TRANSPORT

F Block and The Truman Brewery have probably the most central Shoreditch location, and are easily reached by bus, rail, tube or on foot.

The venue benefits from close access to all forms of public transport. Liverpool Street and Shoreditch High Street stations are a short distance away, with Aldgate East within easy reach, offering fast connections across London and beyond.

Liverpool Street Station
Walking distance: 10 min



Shoreditch High Street Station
Walking distance: 5 min



Aldgate East Station
Walking distance: 10 min



Whitechapel Station
Walking distance: 15 min



Contact us to arrange a viewing:

Phone

+44(0)20 7770 6001

Email

events@trumanbrewery.com

Drop in

The Truman Brewery Events Department,
E y's Yard,
15 Hanbury Street,
London E1 6QR